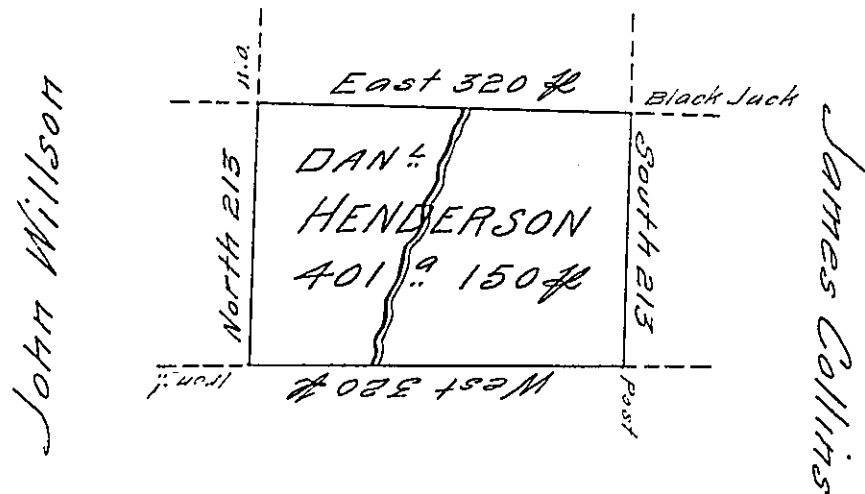


Tho^s Mifflin



Near the District Line

Situate on the Waters of Beaver Creek
 in Allegheny County ~~in~~ Containing 401 1/2 150 and
 allowance of Six Cent for Roads &c Surveyed
 the 11th day of August 1796 In pursuance of
 his improvement Bearing Date 24th day of
 July 1796 —

W^m Power D^r Sr.

To Dan^l Brodhead Esq^r }
 Surveyor General }

IN TESTIMONY that the above is a copy of the original remaining on file in
 the Department of Internal Affairs of Pennsylvania, made
 conformably to an Act of Assembly approved the 16th day of
 February, 1833, I have hereunto set my Hand and caused
 the Seal of said Department to be affixed at Harrisburg,
 this second day of August 1906

Loacn
 Secretary of Internal Affairs.